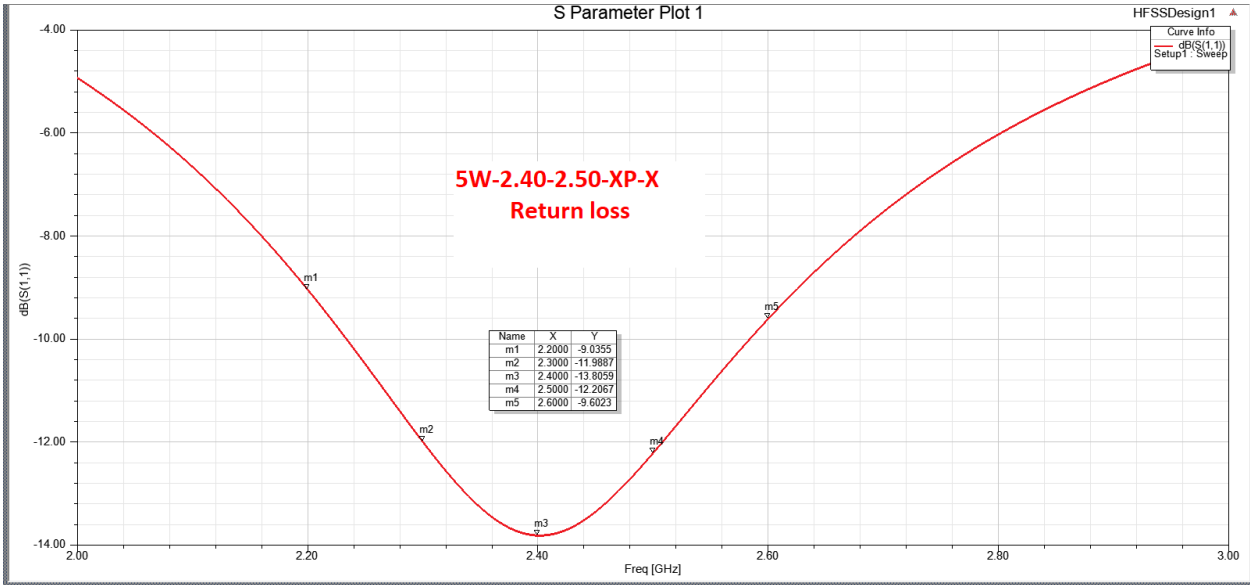
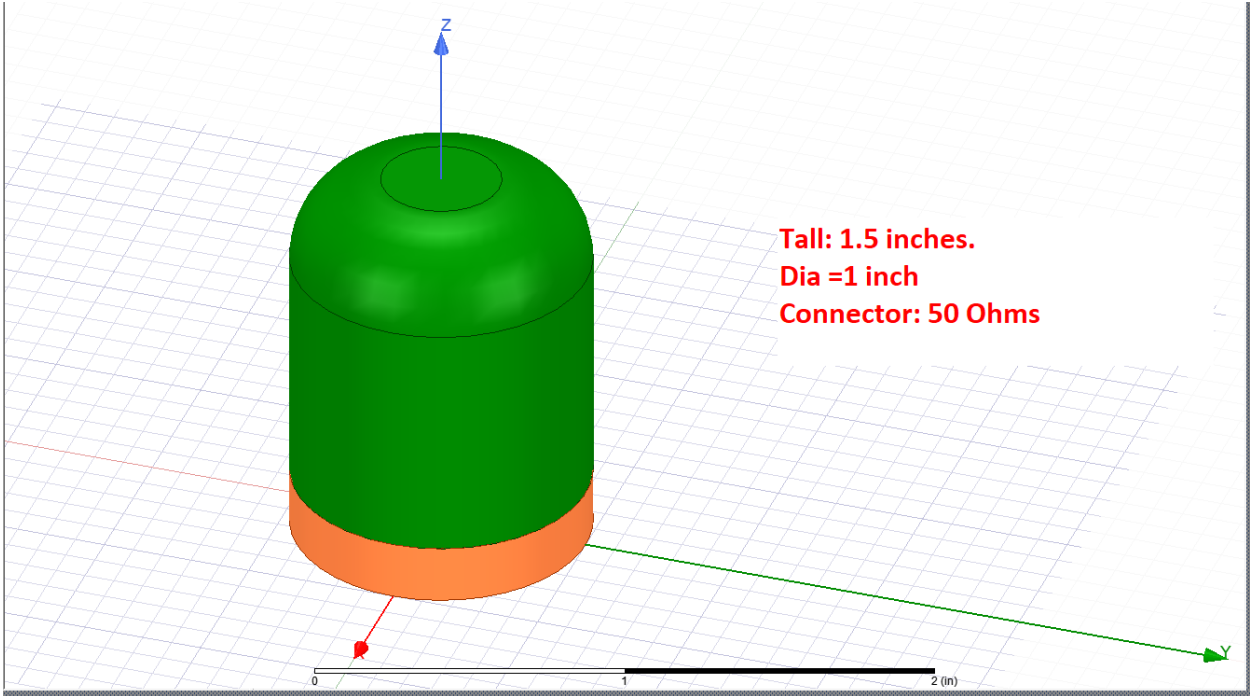
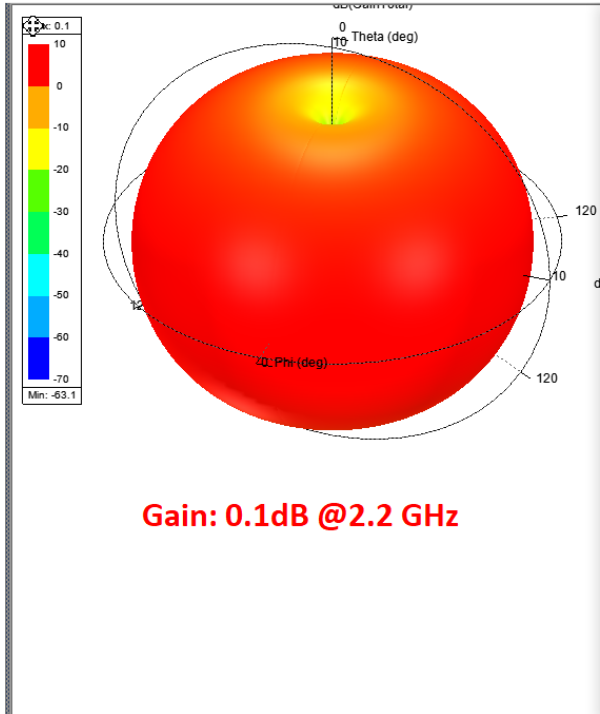


**5W-2.4-2.5-XP-1**  
**(Frequency:2.4-2.5GHz small sizes)**





Report: 5W-1.6-2 - HFSSDesign1 - Gain Plot 4 - dB(GainTotal)

Context: Solution: Setup1 : LastAdaptive Geometry: Infinite Sphere1

Trace Families: Families: 1 available

Variable	Value	Edit
Freq	2.2GHz	...

Nominals: bp\_h, bp\_r, con\_h, con\_h\_r, co

Update Report:  Real time Update

Output Variables... Options... New Report Apply Trace Add Trace Close

Report: 5W-1.6-2 - HFSSDesign1 - Gain Plot 10 - New Trace(s)

Context: Solution: Setup1 : LastAdaptive Geometry: Infinite Sphere1

Trace Families: Families Display Families: 3 available

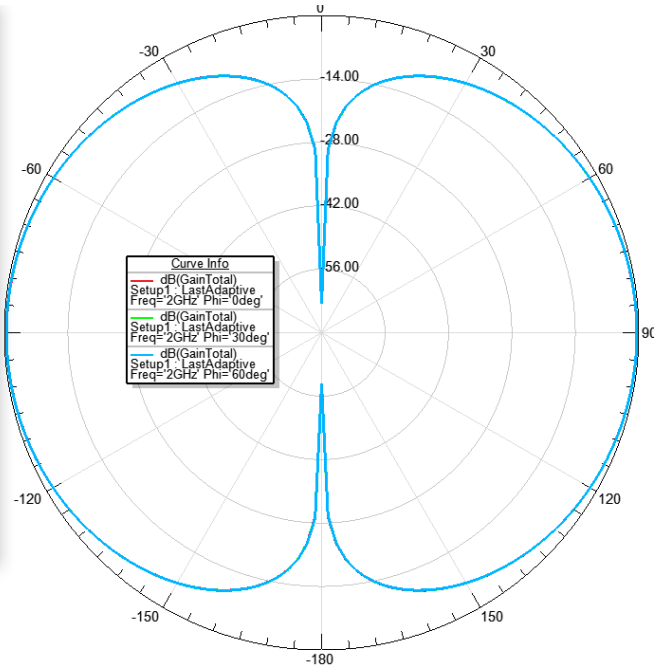
Sweeps  Available variations

Variable	Value	Edit
Phi	0deg, 30deg, 60deg	...
Freq	2GHz	...

Nominals: bp\_h, bp\_r, con\_h, con\_h\_r, co

Update Report:  Real time Update

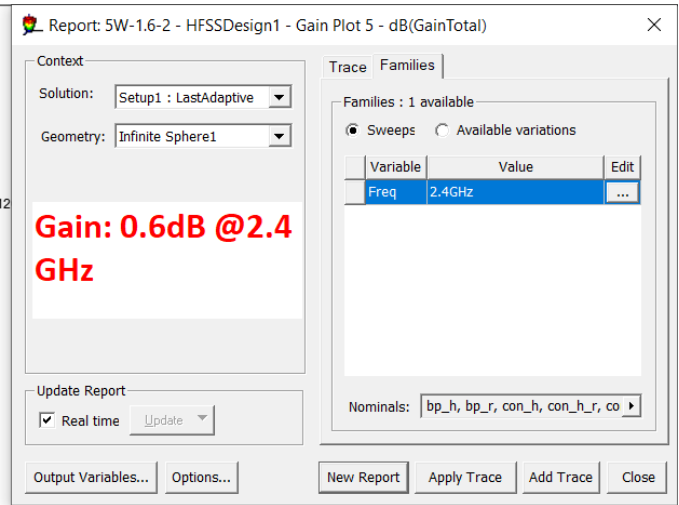
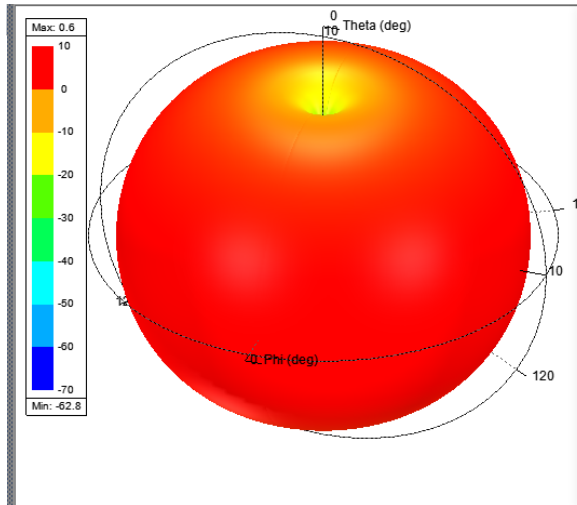
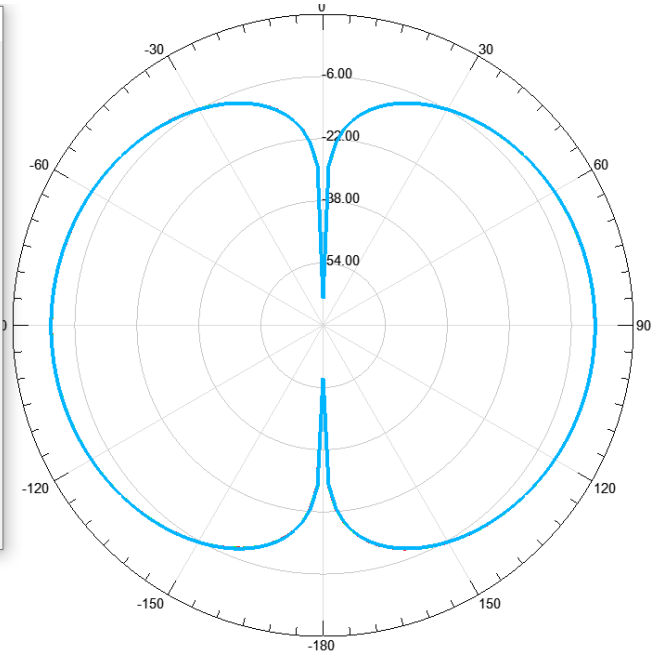
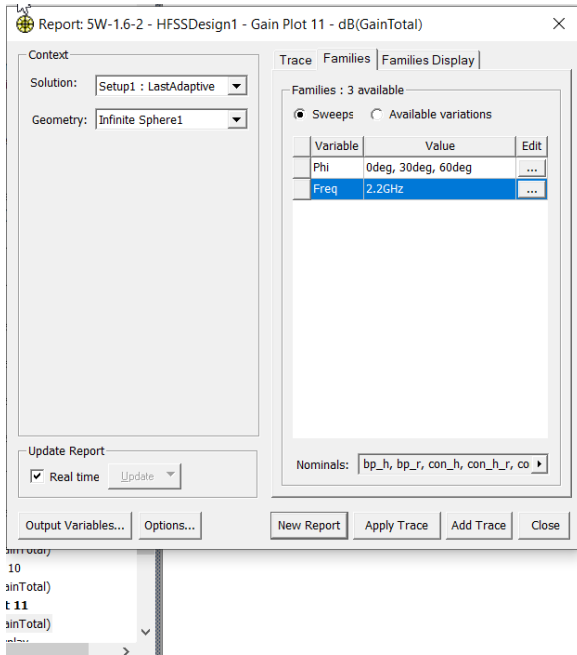
Output Variables... Options... New Report Apply Trace Add Trace Close



ainTotal)

t 10

ainTotal)



Report: 5W-1.6-2 - HFSSDesign1 - Gain Plot 12 - New Trace(s)

Context  
 Solution: Setup1 : LastAdaptive  
 Geometry: Infinite Sphere1

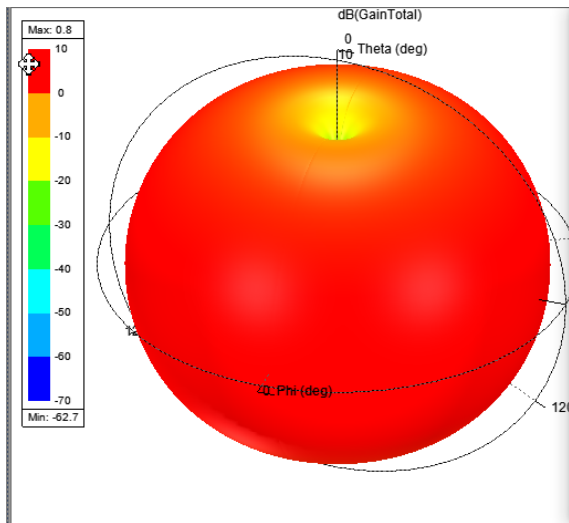
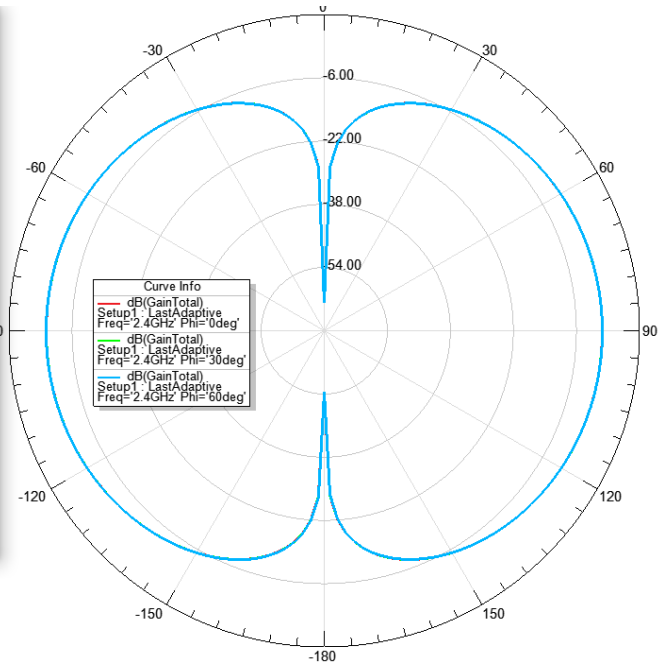
Trace Families Families Display  
 Families : 3 available  
 Sweeps  Available variations

Variable	Value	Edit
Phi	0deg, 30deg, 60deg	...
Freq	2.4GHz	...

Nominals: bp\_h, bp\_r, con\_h, con\_h\_r, co

Update Report  
 Real time Update

Output Variables... Options... New Report Apply Trace Add Trace Close



Report: 5W-1.6-2 - HFSSDesign1 - Gain Plot 6 - dB(GainTotal)

Context  
 Solution: Setup1 : LastAdaptive  
 Geometry: Infinite Sphere1

Trace Families  
 Families : 1 available  
 Sweeps  Available variations

Variable	Value	Edit
Freq	2.5GHz	...

Nominals: bp\_h, bp\_r, con\_h, con\_h\_r, co

Update Report  
 Real time Update

Output Variables... Options... New Report Apply Trace Add Trace Close

**Gain: 0.8dB @ 2.5 GHz**

Report: 5W-1.6-2 - HFSSDesign1 - Gain Plot 13 - New Trace(s)

Context

Solution: Setup1 : LastAdaptive

Geometry: Infinite Sphere1

Trace Families Families Display

Families: 3 available

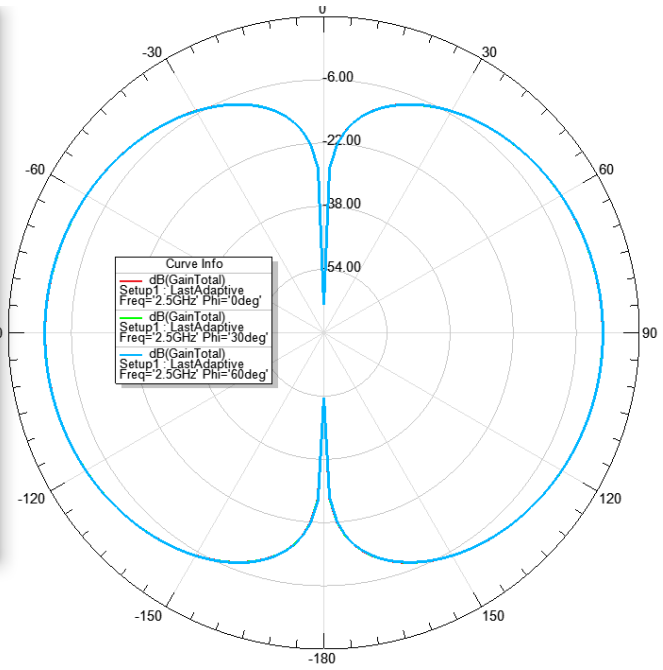
Sweeps  Available variations

Variable	Value	Edit
Phi	0deg, 30deg, 60deg	...
Freq	2.5GHz	...

Nominals: bp\_h, bp\_r, con\_h, con\_h\_r, co

Update Report

Real time



12  
ainTotal)

t 13  
ainTotal)