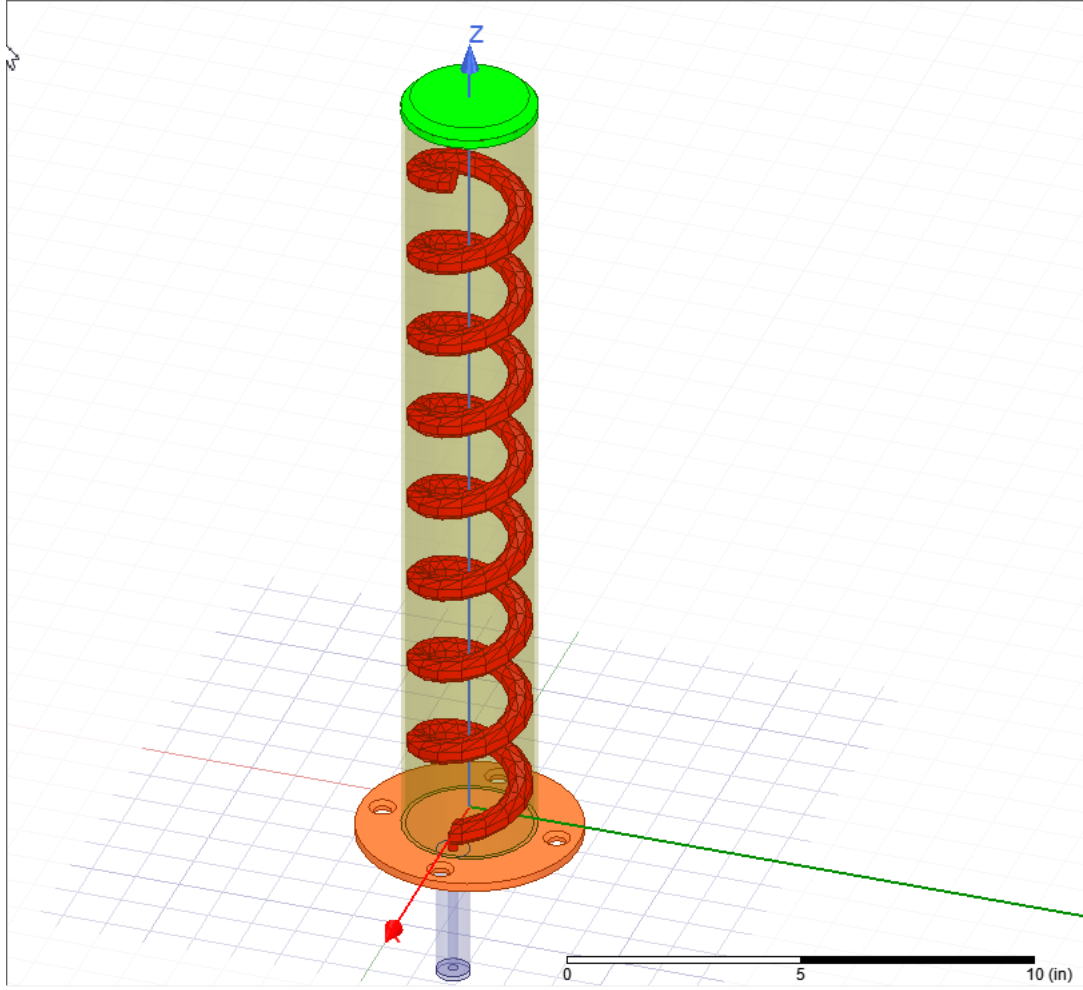
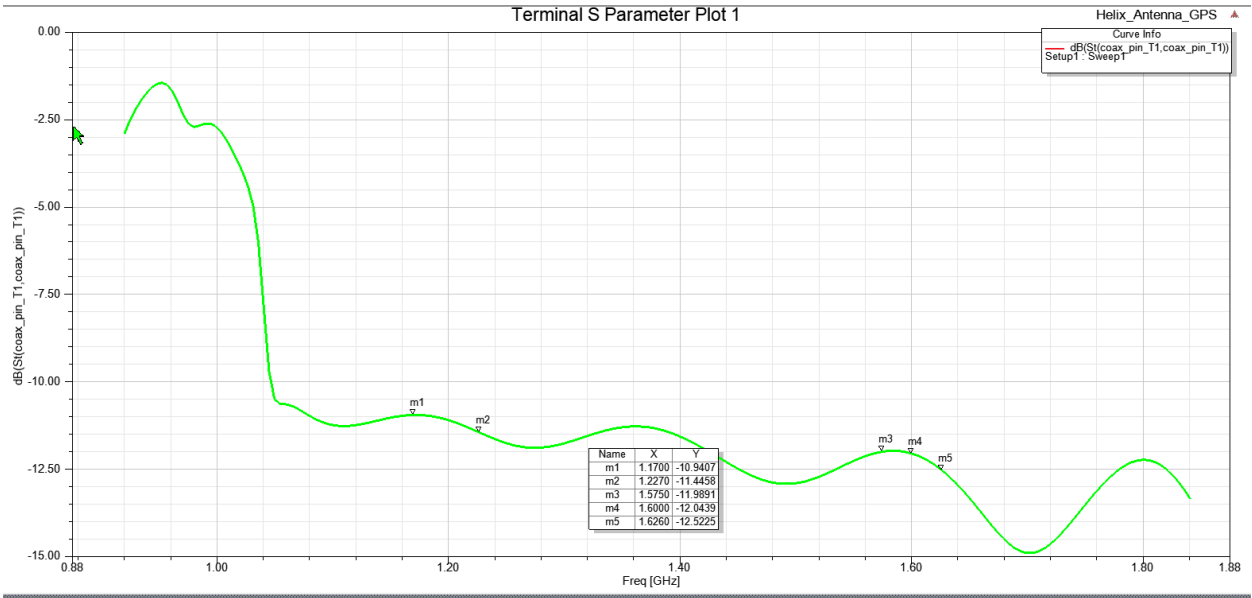


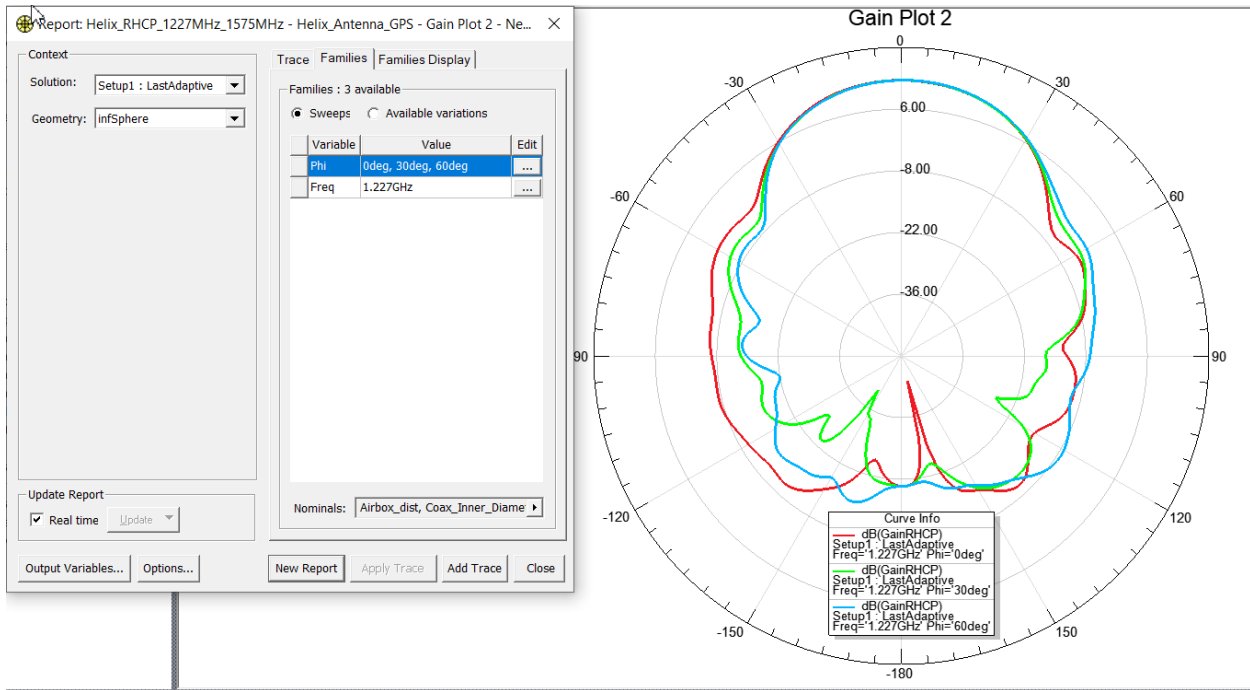
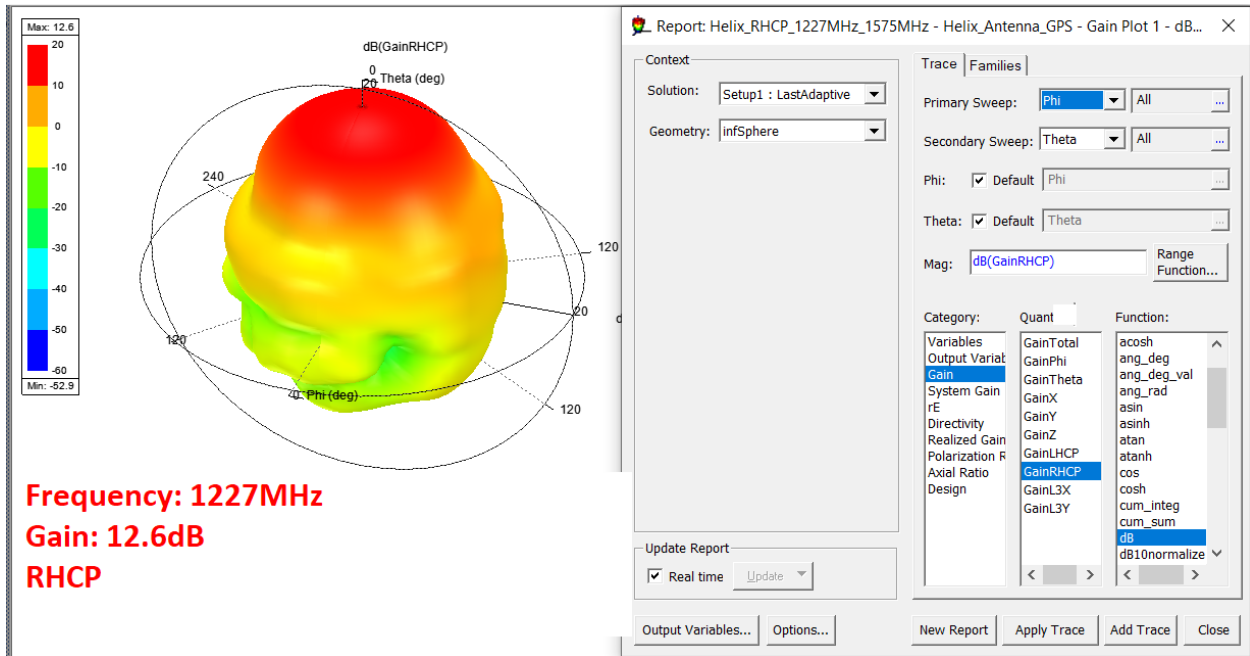
L1/L2 GPS/L-Band (1.0-2.0 GHz) Helix Antenna
17.5x2.56-1227/1575/1616-RHCP-Passive



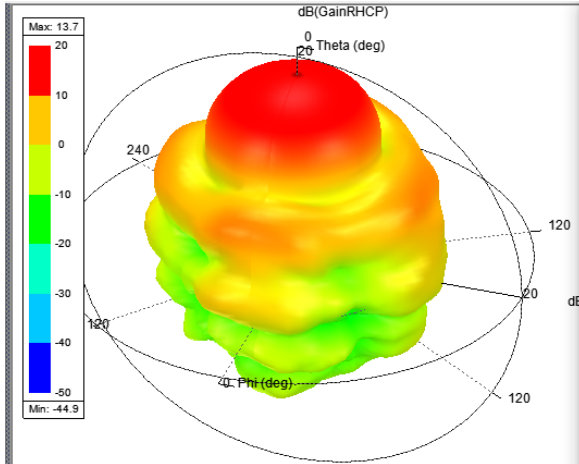
Terminal S Parameter Plot 1



1) Frequency:1227 MHz



2) Frequency 1575 MHz



Frequency: 1575MHz
Gain: 13.7 dB
RHCP

Report: Helix_RHCP_1227MHz_1575MHz - Helix_Antenna_GPS - Gain Plot 5 - dB...

Context
 Solution: Setup1 : LastAdaptive
 Geometry: infSphere

Trace Families
 Primary Sweep: Phi
 Secondary Sweep: Theta
 Phi: Default Phi
 Theta: Default Theta
 Mag: dB(GainRHCP)

Category	Quant	Function
Variables	GainTotal	ang_rad
Output Variat	GainPhi	asin
Gain	GainTheta	asinh
System Gain	GainX	atan
rE	GainY	atanh
Directivity	GainZ	cos
Realized Gain	GainLHCP	cosh
Polarization R	GainRHCP	cum_integ
Axial Ratio	GainL3X	cum_sum
Design	GainL3Y	dB
		dB10normalize
		dB20normalize
		dBc
		dBm

Update Report
 Real time

Output Variables... Options... New Report Apply Trace Add Trace Close

Report: Helix_RHCP_1227MHz_1575MHz - Helix_Antenna_GPS - Gain Plot 13 - N...

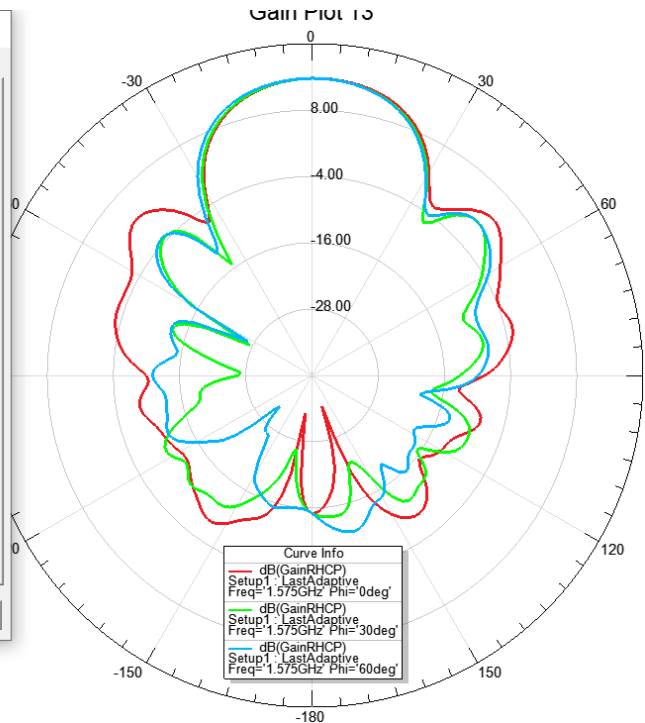
Context
 Solution: Setup1 : LastAdaptive
 Geometry: infSphere

Trace Families Families Display
 Primary Sweep: Theta
 Ang: Default Theta
 Mag: dB(GainRHCP)

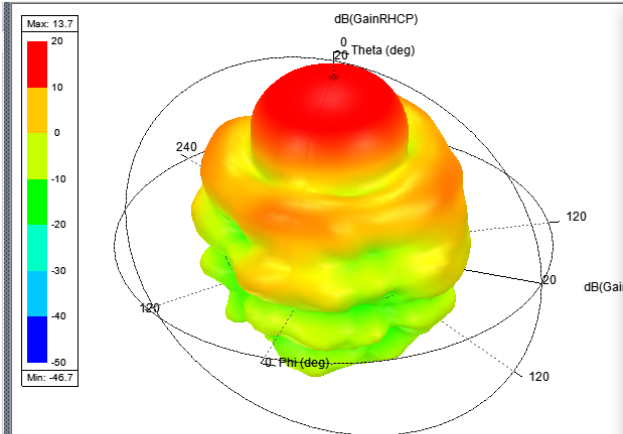
Category	Quant	Function
Variables	GainTotal	<none>
Output Variat	GainPhi	abs
Gain	GainTheta	acos
System Gain	GainX	acosh
rE	GainY	ang_deg
Directivity	GainZ	ang_deg_val
Realized Gain	GainLHCP	ang_rad
Polarization R	GainRHCP	asin
Axial Ratio	GainL3X	asinh
Design	GainL3Y	atan
		atanh
		cos
		cosh
		cum_integ
		cum_sum
		dB
		dB10normalize
		dB20normalize
		dBc

Update Report
 Real time

Output Variables... Options... New Report Apply Trace Add Trace Close



3) Frequency 1616 MHz



Frequency: 1616MHz
Gain: 13.7dB
RHCP

Report: Helix_RHCP_1227MHz_1575MHz - Helix_Antenna_GPS - Gain Plot 6 - dB...

Context
 Solution: Setup1 : LastAdaptive
 Geometry: infSphere

Trace Families
 Families : 1 available
 Sweeps Available variations

Variable	Value	Edit
Freq	1.616GHz	...

Nominals: Airbox_dist, Coax_Inner_Diame

Update Report
 Real time

Report: Helix_RHCP_1227MHz_1575MHz - Helix_Antenna_GPS - Gain Plot 14 - N...

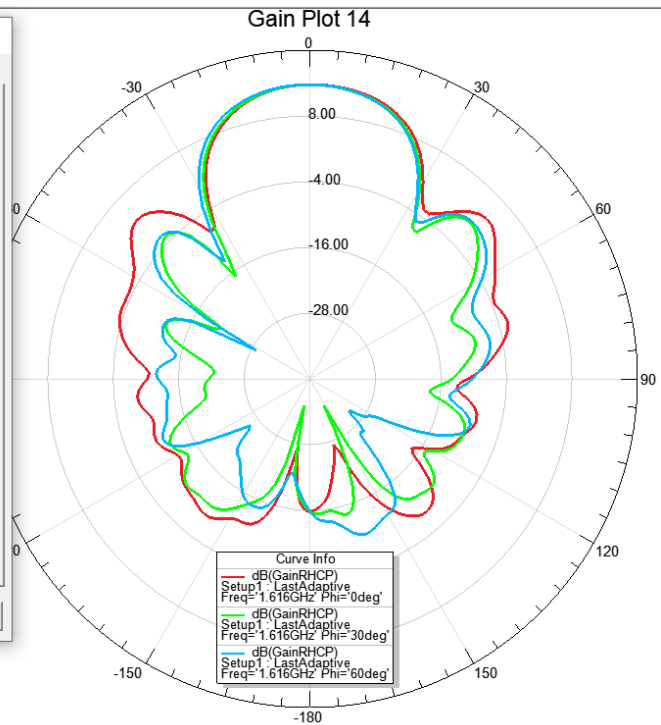
Context
 Solution: Setup1 : LastAdaptive
 Geometry: infSphere

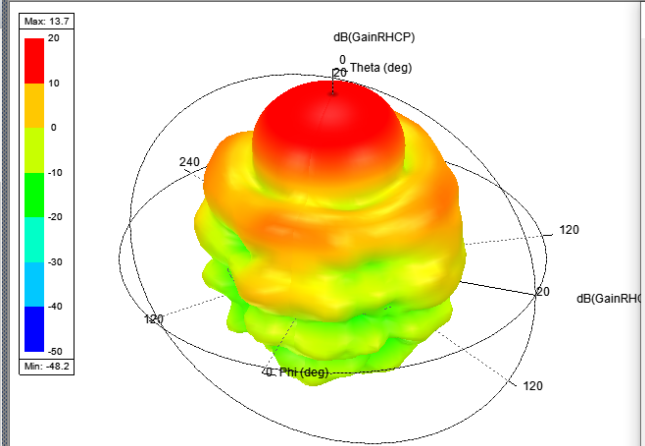
Trace Families Families Display
 Families : 3 available
 Sweeps Available variations

Variable	Value	Edit
Phi	0deg, 30deg, 60deg	...
Freq	1.616GHz	...

Nominals: Airbox_dist, Coax_Inner_Diame

Update Report
 Real time





Frequency: 1626MHz
Gain: 13.7dB
RHCP

Report: Helix_RHCP_1227MHz_1575MHz - Helix_Antenna_GPS - Gain Plot 11 - d...

Context
 Solution: Setup1 : LastAdaptive
 Geometry: infSphere

Trace Families
 Families : 1 available
 Sweeps Available variations

Variable	Value	Edit
Freq	1.626GHz	...

Nominals: Airbox_dist, Coax_Inner_Diame

Update Report
 Real time Update

Output Variables... Options... New Report Apply Trace Add Trace Close

Report: Helix_RHCP_1227MHz_1575MHz - Helix_Antenna_GPS - Gain Plot 15 - N...

Context
 Solution: Setup1 : LastAdaptive
 Geometry: infSphere

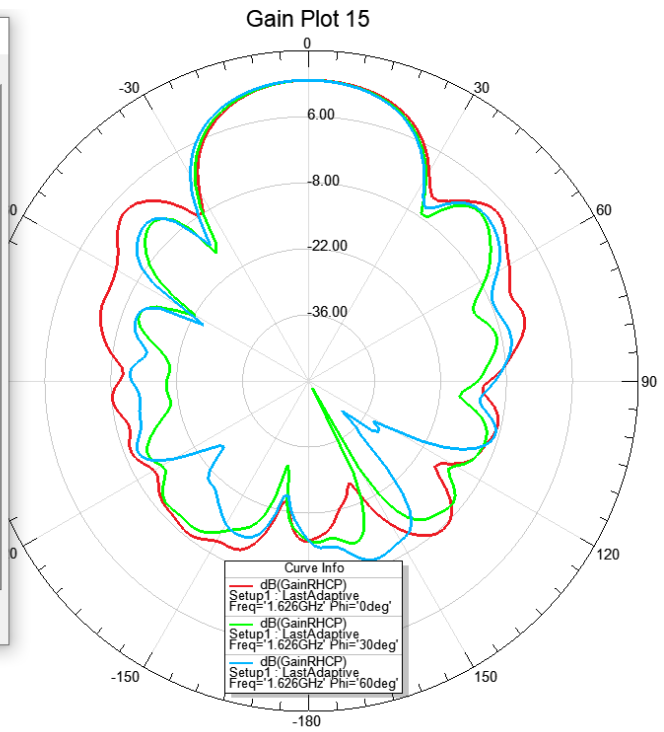
Trace Families Families Display
 Families : 3 available
 Sweeps Available variations

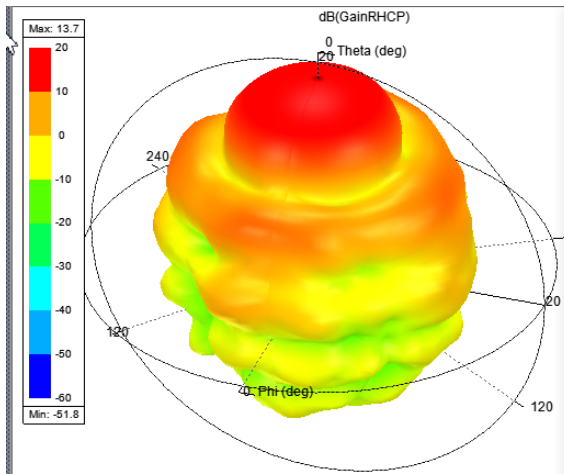
Variable	Value	Edit
Phi	0deg, 30deg, 60deg	...
Freq	1.626GHz	...

Nominals: Airbox_dist, Coax_Inner_Diame

Update Report
 Real time Update

Output Variables... Options... New Report Apply Trace Add Trace Close





Frequency: 1636 MHz
Gain: 13.7dB
RHCP

Report: Helix_RHCP_1227MHz_1575MHz - Helix_Antenna_GPS - Gain Plot 12 - d... X

Context
 Solution: Setup1 : LastAdaptive
 Geometry: infSphere

Trace Families
 Families : 1 available
 Sweeps Available variations

Variable	Value	Edit
Freq	1.636GHz	...

Nominals: Airbox_dist, Coax_Inner_Diame

Update Report
 Real time Update

Output Variables... Options... New Report Apply Trace Add Trace Close

Report: Helix_RHCP_1227MHz_1575MHz - Helix_Antenna_GPS - Gain Plot 16 - N... X

Context
 Solution: Setup1 : LastAdaptive
 Geometry: infSphere

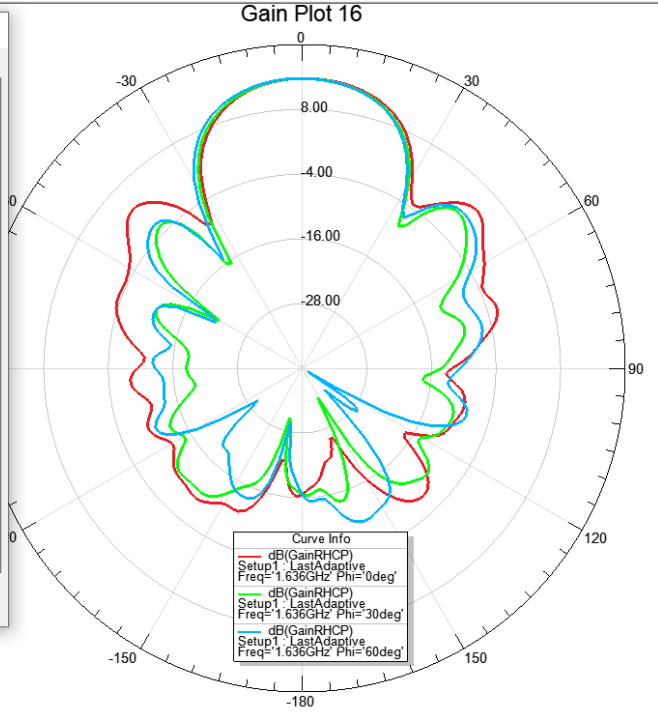
Trace Families Families Display
 Families : 3 available
 Sweeps Available variations

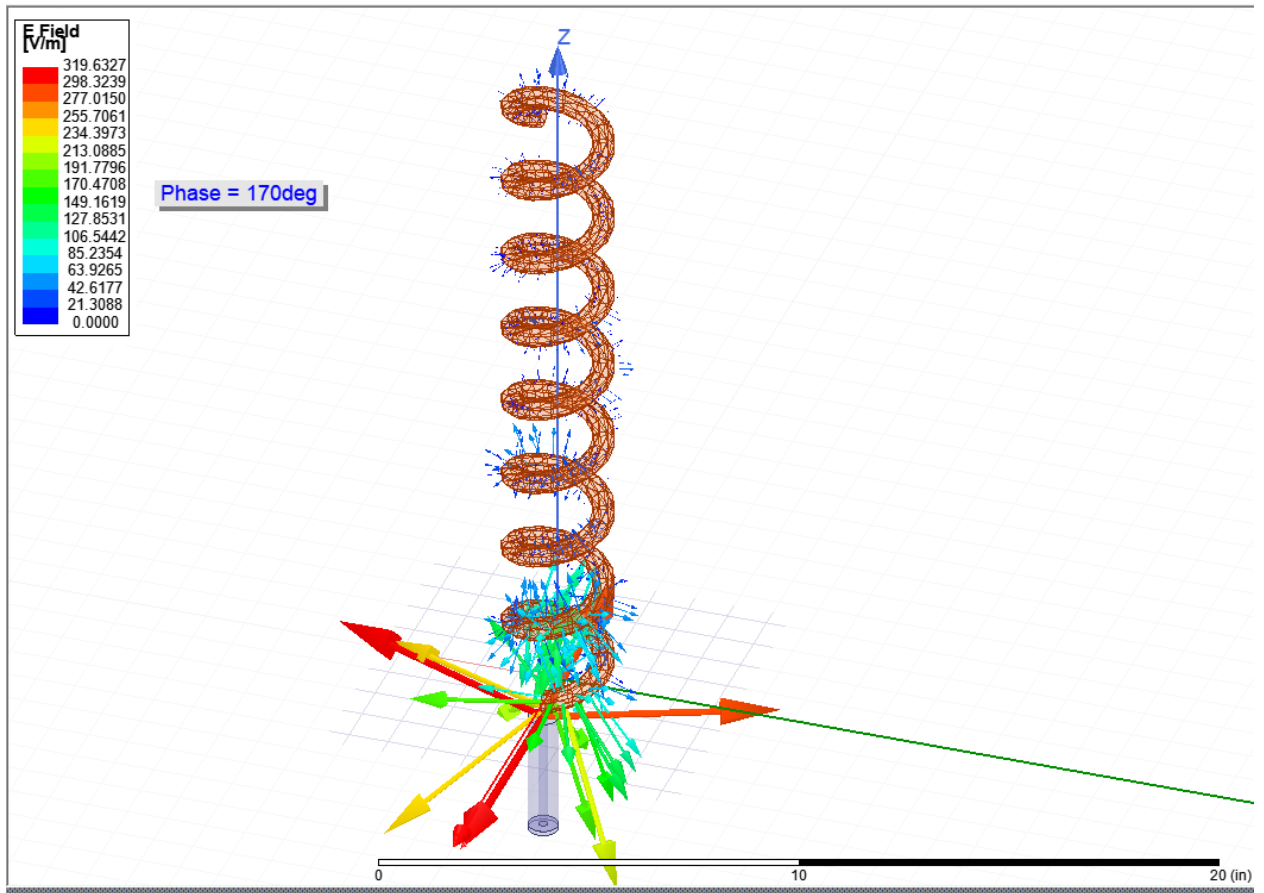
Variable	Value	Edit
Phi	0deg, 30deg, 60deg	...
Freq	1.636GHz	...

Nominals: Airbox_dist, Coax_Inner_Diame

Update Report
 Real time Update

Output Variables... Options... New Report Apply Trace Add Trace Close





Electrical :

L1/L2 GPS/L-Band (1.0-2.0 GHz) Helix Antenna

17.5x2.56-1227/1575/1616-RHCP-Passive

Mechanical:

Base plate: Aluminum.

Helix element: Copper

Radome: Fiber Glass

Designed: Victor Dat Do